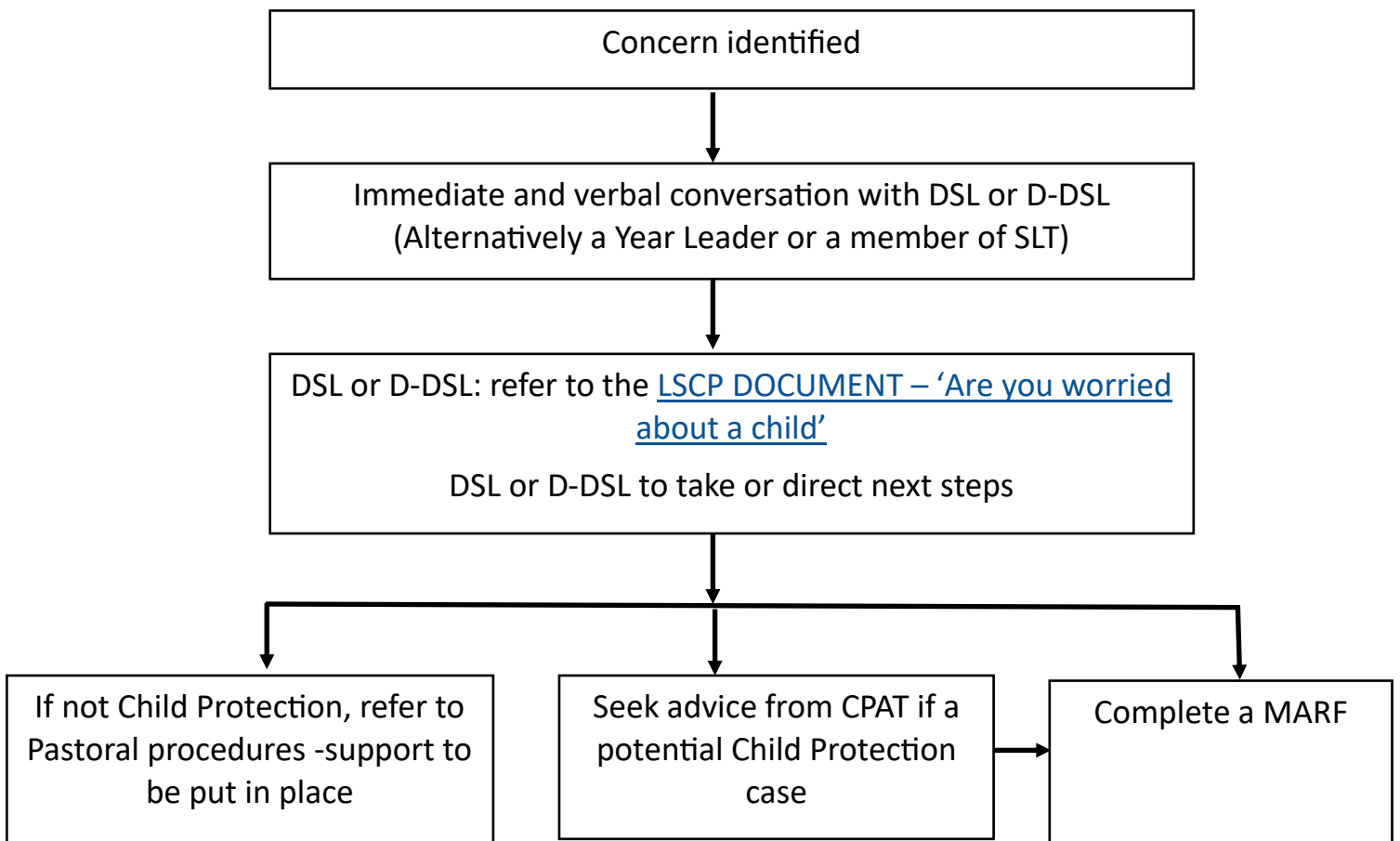


Procedure for raising a Safeguarding Concern



Greatfields Safeguard Team



Mrs Sarah Bennett
Deputy Headteacher



Ms Anne Wright
Wellbeing Safeguarding
Leader



Ms Lucy Chettur
Safeguarding Officer



Ms Jo Evans
Family Liaison Officer



Ms Tamara Malcolm
Family Liaison Officer

DSL – Designated Safeguarding Lead

D-DSL Deputy Designated Safeguarding Lead

CPAT – Child Protection Assessment Team

MARF – Multi Agency Referral Form



GREATFIELDS SCHOOL

Procedure for raising a Safeguarding Concern

Physical abuse Signs which may suggest physical abuse include: <ul style="list-style-type: none"> multiple bruising to different parts of the body finger tip bruising to the chest, back, arms or legs burns of any shape or size an injury for which there is no adequate explanation 	Sexual abuse Signs which may suggest sexual abuse include: <ul style="list-style-type: none"> something a child has told you or someone else a child who shows worrying sexualised behaviour in their play a child who seems to have inappropriate sexual knowledge for their age
Emotional harm Signs which may suggest emotional harm include: <ul style="list-style-type: none"> children whose behaviour is excessive, for example, excessive bed wetting, overeating, rocking or head banging who self-harm, for example, they may cut or scratch themselves or overdose who show high levels of anxiety, unhappiness or withdrawal who usually seek out or avoid affection 	Neglect Signs which may suggest neglect include: <ul style="list-style-type: none"> children who appear persistently undersized or underweight children who continually appear tired or lacking in energy children who suffer injuries often due to lack of supervision squalid, unhygienic or dangerous home conditions

If you think a child may be suffering or are concerned that a child has suffered harm, neglect or abuse in the past, follow the reporting process overleaf.

If unable to do so (e.g. during a holiday period) use the contact details below.

Local Authority	Monday to Friday	Out of hours &	Local Authority Website re Social Services Referral
Barking and	02082 273811	02082 273811	https://www.lbbd.gov.uk/safeguarding-at-risk-children
Redbridge	02087 083885	02087 085897	https://www.redbridge.gov.uk/adult-and-childrens-services/child-protection/
Newham	02033 734600	02084 302000	https://www.newham.gov.uk/Pages/Services/Child-protection.aspx
Waltham Forest	02084 962310	02084 963000	https://directory.walthamforest.gov.uk/kb5/walthamforest/directory/advice.page?id=IWShEFAQHU
Enfield	02083 792507	02083 791000	https://new.enfield.gov.uk/enfieldscsb/professionals-volunteers/childrens-single-point-of-entry-spoee/
Haringey	02084 894470	02083 480000	http://www.haringeyscbs.org/what-do-if-youre-worried-about-child
Havering	01708 433222	01708 433999	https://www.havering.gov.uk/info/20083/safeguarding_children/412/report_a_concern_with_a_child
Essex	03456 037627	03456 061212	http://www.essex.gov.uk/Health-Social-Care/Families-and-childrens-social-care/Protecting-Vulnerable-Children/Pages/Children-at-Risk-of-Abuse-or-Neglect.aspx
NSPCC Childline	0800 1111	0800 1111	https://www.nspcc.org.uk/

WHISTLE BLOWING

Children cannot be expected to raise concerns in an environment where staff members fail to do so.

All staff members are made aware of their duty to raise concerns, where they exist, about the management of Child Protection, which may include the attitude or actions of colleagues. If necessary, they will speak with the Headteacher, the Chair of governors, the designated governor for Safeguarding and Child Protection or with the Local Authority Designated Officer (LADO) - Mike Cullern, (lado@lbbd.gov.uk , 020 8227 3934).

A clear reporting procedure is in place for children, parents and other people to report concerns or complaints, including abusive or poor or unsafe practice and potential failures in the school's Safeguarding regime. All staff should be familiar with the school's *Whistle blowing policy*.