

- General Notes
1. Drawing indicates design intent only.
 2. The contractor is responsible for taking and scheduling all dimensions on site.
 3. Do not scale from drawings.
 4. Report all discrepancies to the architect before proceeding.

Revision Date Description

Client
London Borough of Barking and Dagenham

SURFACE TO AIR

Unit 210, Metropolitan Wharf, 70 Wapping Wall, London, E1W 3SS
T: +44 (0)20 3727 3300 E: info@surface-to-air.com
Registered office in England and Wales no: 05302392

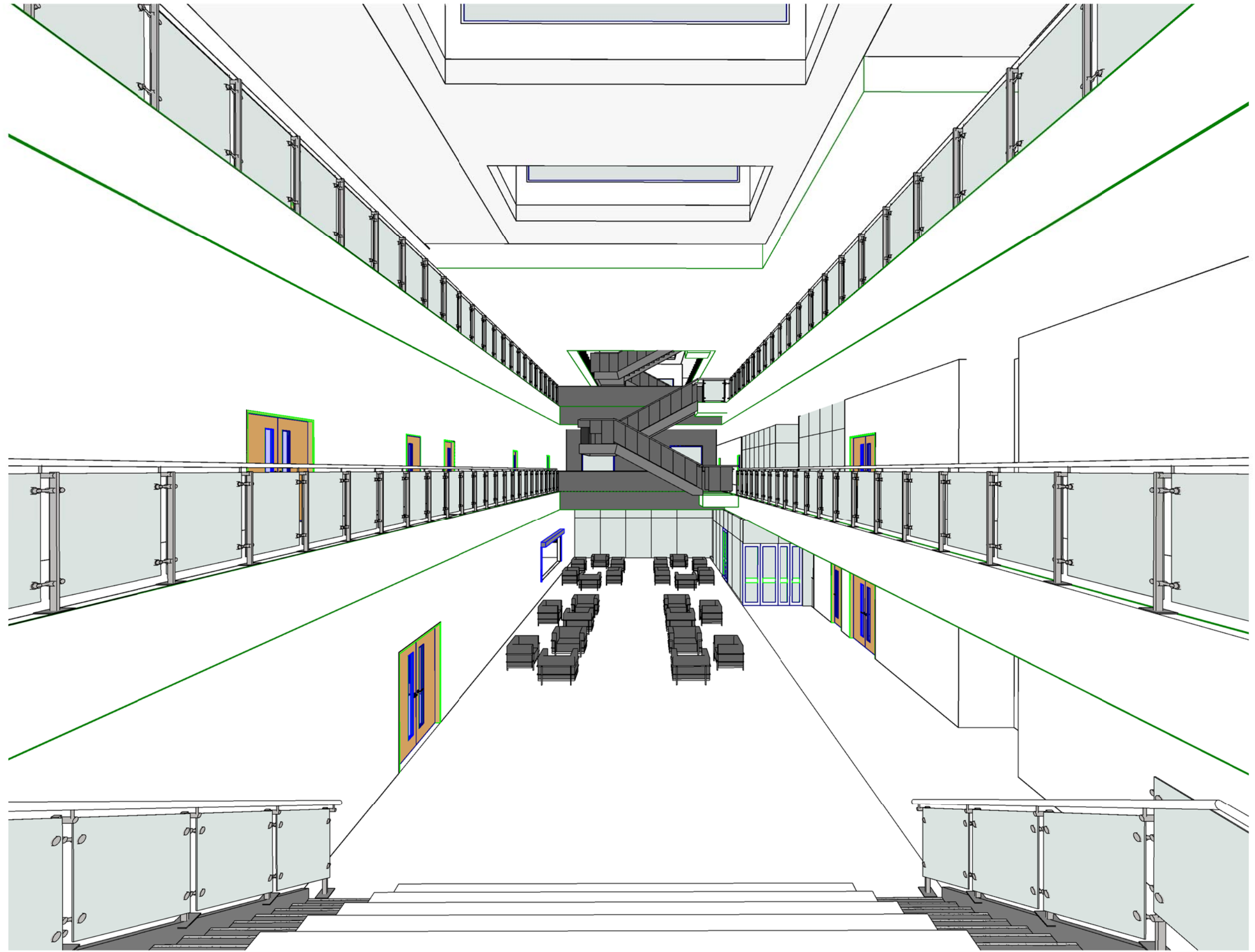
Project
Greatfields Zone 2

Drawing Title
3D Section

Scale		Status		Checked By				
@ A1								
Project	Origin	Zones	Level	Type	Role	Class/Number	Suitability	Revision
1641	S2A				A	SK-009		

16/06/2017 12:09:08
C:\Users\va.bertouanis\Documents\1641 Greatfields School_Zone 2B_20170615.rvt

© SURFACE TO AIR



General Notes

1. Drawing indicates design intent only.
2. The contractor is responsible for taking and scheduling all dimensions on site.
3. Do not scale from drawings.
4. Report all discrepancies to the architect before proceeding.

Revision Date Description

Client
London Borough of Barking and Dagenham

SURFACE TO AIR

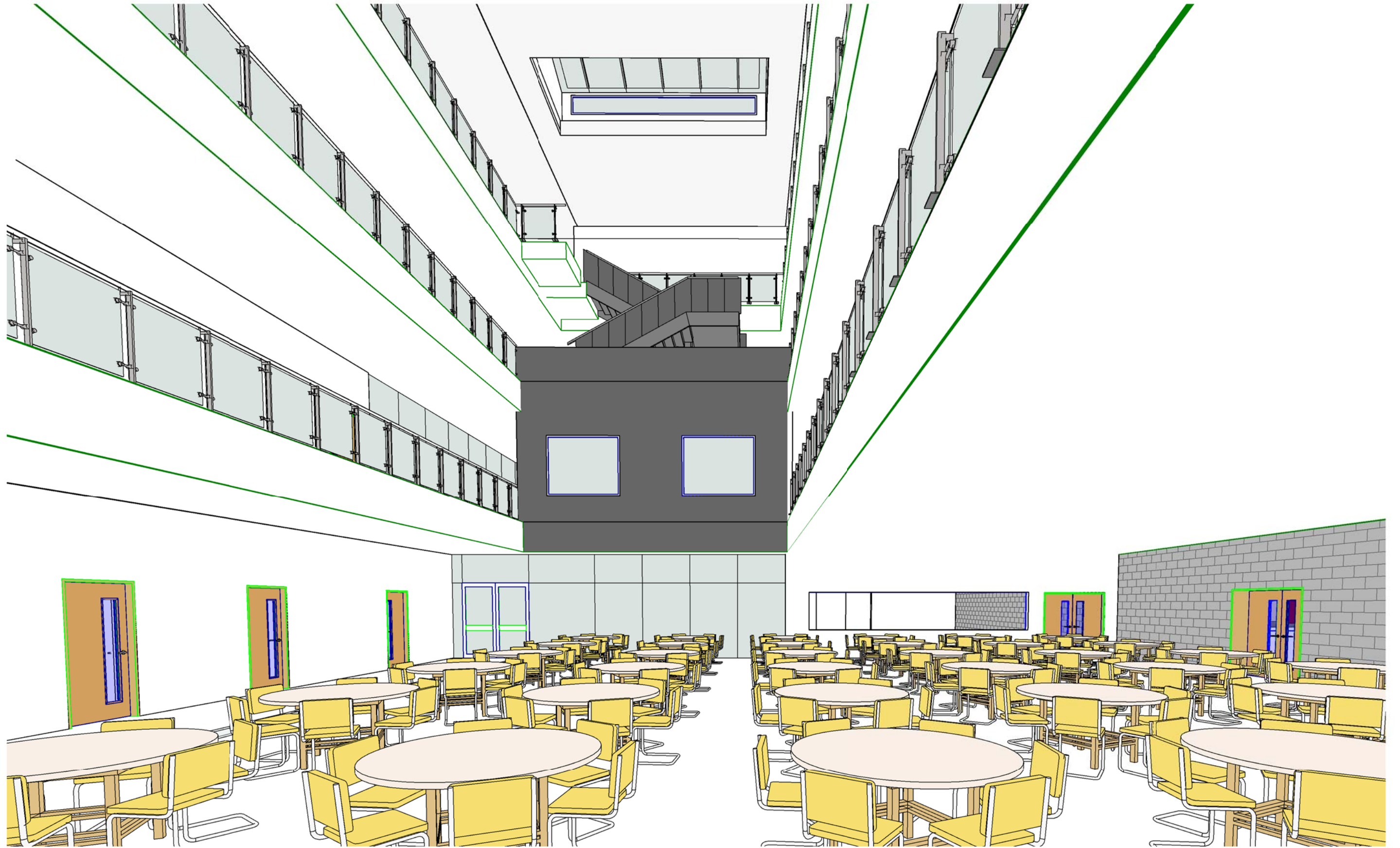
Unit 210, Metropolitan Wharf, 70 Wrapping Walk, London, E1W 3SS
T: +44 (0)20 3727 2300 E: info@surface-to-air.com
Registered office in England and Wales no: 05302392

Project
Greatfields Zone 2

Drawing Title
3D Views - Internal

Scale		Status		Checked By			
@ A1							
Project	Origin	Level	Type	Role	Class/Number	Suitability	Revision
1641	S2A			A	SK - 003		

16/06/2017 11:48:41
C:\Users\va.bertouanis\Documents\1641 Greatfields School_Zone_2B_20170615.rvt



- General Notes
1. Drawing indicates design intent only.
 2. The contractor is responsible for taking and scheduling all dimensions on site.
 3. Do not scale from drawings.
 4. Report all discrepancies to the architect before proceeding.

Revision Date Description

Client
London Borough of Barking and Dagenham

SURFACE TO AIR

Unit 210, Metropolitan Wharf, 70 Wapping Wall, London, E1W 3SS
T: +44 (0)20 3727 2300 E: info@surface-to-air.com
Registered office in England and Wales No: 05302392

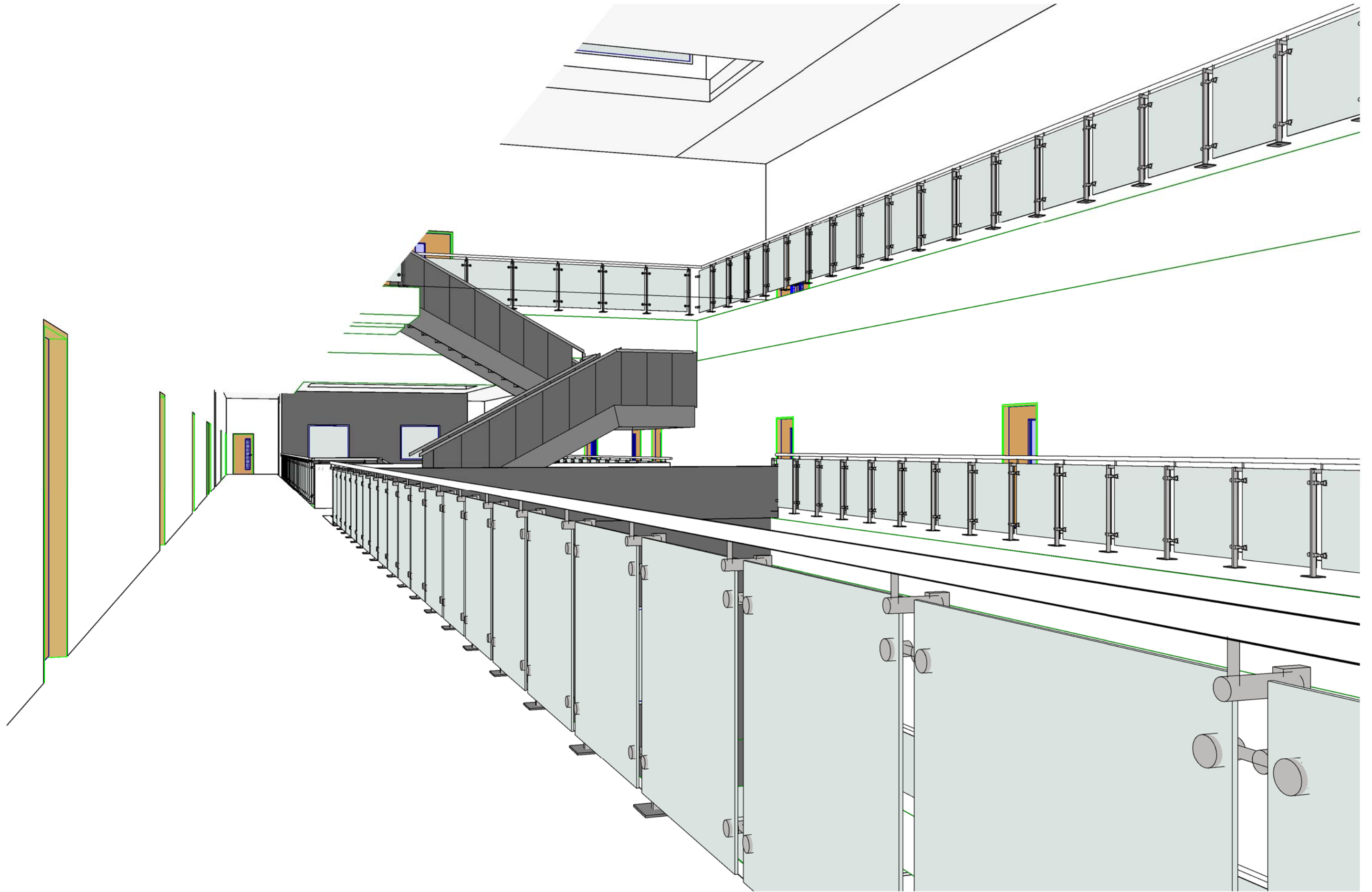
Project
Greatfields Zone 2

Drawing Title
3D Views - Internal

Scale		Status		Checked By				
@ A1				Checker				
Project	Origin	Zones	Level	Type	Role	Class/Number	Subsability	Revision
1641	S2A			A	SK	-		004

16/06/2017 11:50:41
C:\Users\la.bertouanist\Documents\1641 Greatfields School_Zone 2B_20170615.rvt

© SURFACE TO AIR



- General Notes
1. Drawing indicates design intent only.
 2. The contractor is responsible for taking and scheduling all dimensions on site.
 3. Do not scale from drawings.
 4. Report all discrepancies to the architect before proceeding.

Revision Date Description

Client
London Borough of Barking and Dagenham

SURFACE TO AIR

Unit 210, Metropolitan Wharf, 70 Wrapping Walk, London, E1W 3SS
T: +44 (0)20 3727 2300 E: info@surface-to-air.com
Registered office in England and Wales no: 05302392

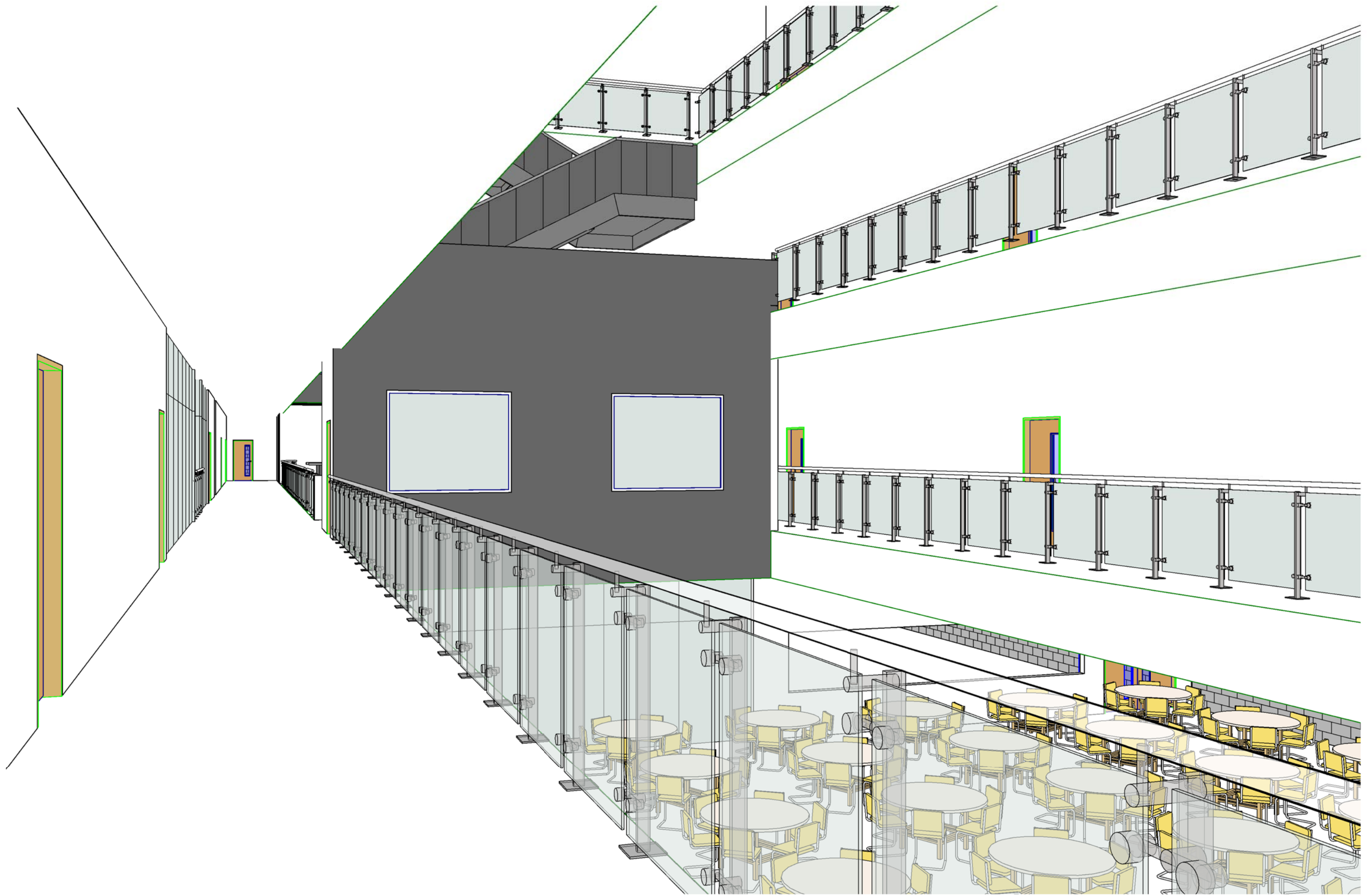
Project
Greatfields Zone 2

Drawing Title
3D Views - Internal

Project	Origin	Zones	Level	Type	Role	Class/Number	Suitability	Revision
1641	S2A				A	SK-005		

Scale @ A1 Status Checked By
16/06/2017 11:51:05
© SURFACE TO AIR

C:\Users\va.bertouanis\Documents\1641 Greatfields School_Zone 2B_20170615.rvt



General Notes

1. Drawing indicates design intent only.
2. The contractor is responsible for taking and scheduling all dimensions on site.
3. Do not scale from drawings.
4. Report all discrepancies to the architect before proceeding.

Revision Date Description

Client
London Borough of Barking and Dagenham

SURFACE TO AIR

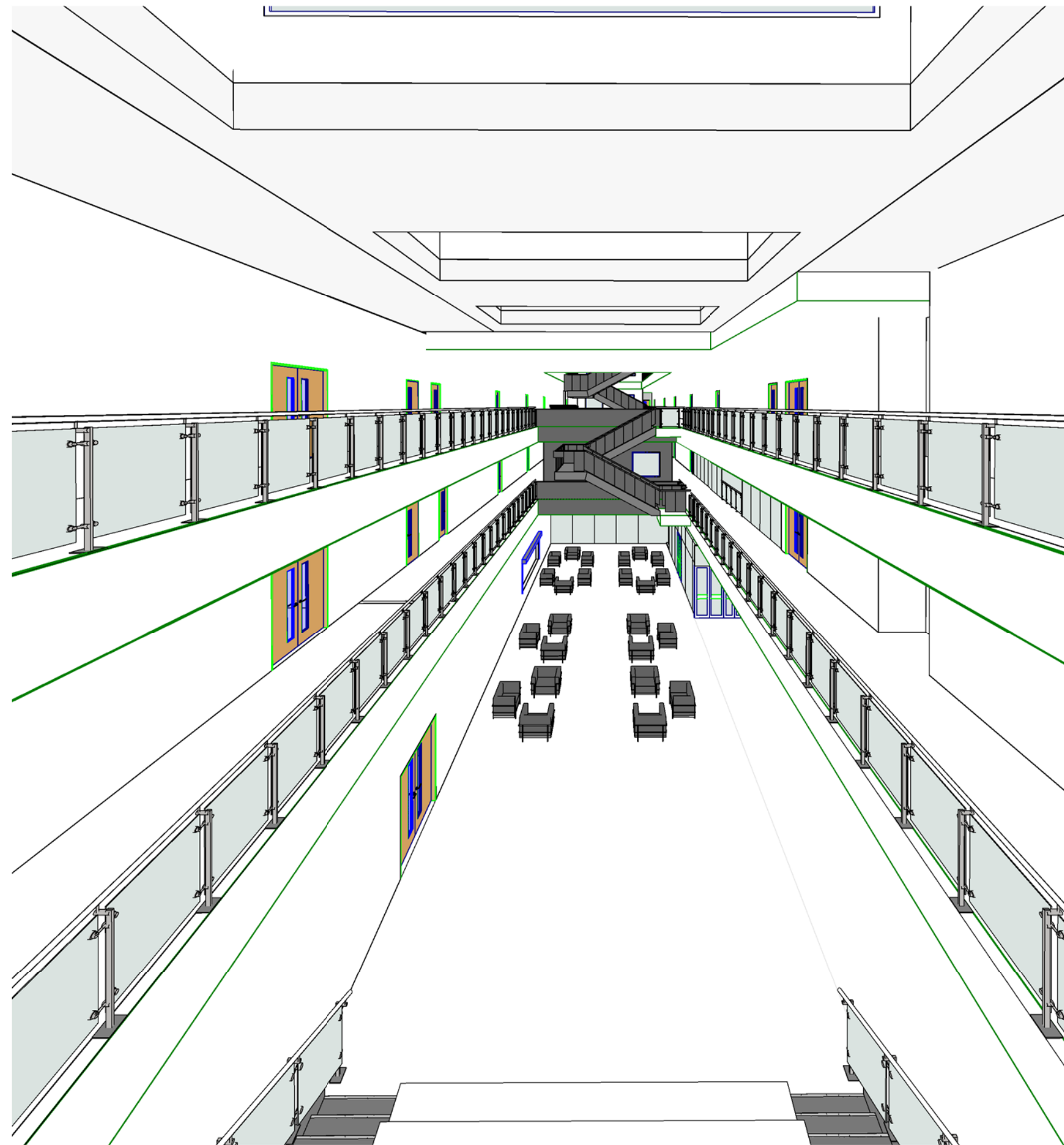
Unit 210, Metropolitan Wharf, 70 Wrapping Wall, London, E1W 3SS
T: +44 (0)20 3727 3300 E: info@surface-to-air.com
Registered office in England and Wales no: 05302392

Project
Greatfields Zone 2

Drawing Title
3D Views - Internal

Scale	Status	Checked By						
@ A1								
Project	Origin	Zones	Level	Type	Role	Class/Number	Suitability	Revision
1641	S2A				A	SK - 006		

16/06/2017 11:52:50
C:\Users\va.bertozzi\Documents\1641 Greatfields School_Zone 2B_20170615.rvt



HEAD/DEPUTY
SECONDARY
OFFICE VIEW
AT THE ATRIUM

General Notes

1. Drawing indicates design intent only.
2. The contractor is responsible for taking and scheduling all dimensions on site.
3. Do not scale from drawings.
4. Report all discrepancies to the architect before proceeding.

Revision Date Description

Client
London Borough of Barking and Dagenham

SURFACE TO AIR

Unit 210, Metropolitan Wharf, 70 Wrapping Wall, London, E1W 3SS
T: +44 (0)20 3727 3300 E: info@surface-to-air.com
Registered office in England and Wales no: 05302392

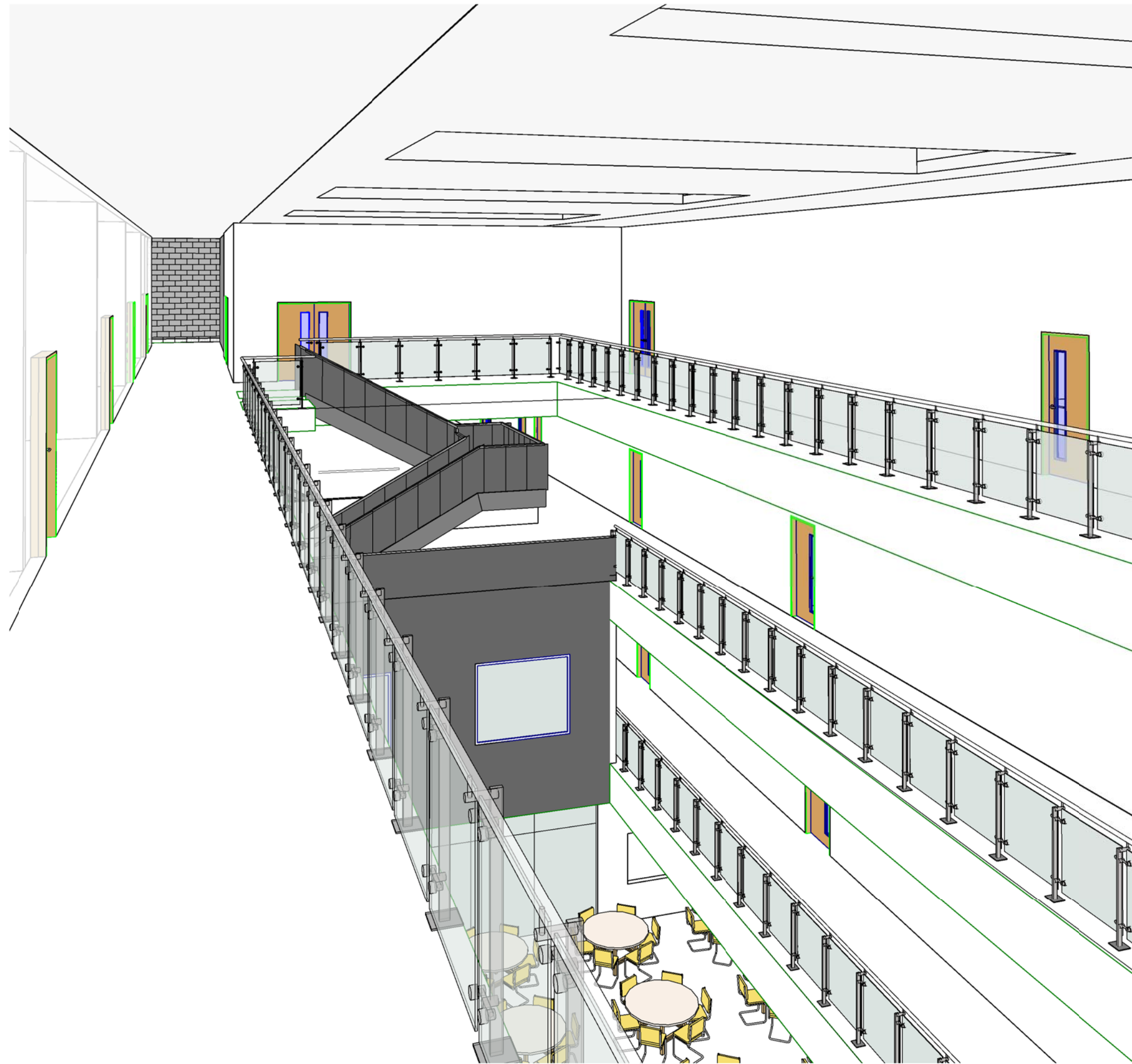
Project
Greatfields Zone 2

Drawing Title
3D Views - Internal

Scale		Status		Checked By				
@ A1				Checker				
Project	Origin	Zones	Level	Type	Role	Class/Number	Suitability	Revision
1641	S2A			A	SK	-	007	

16/06/2017 11:59:08
C:\Users\la.bertouanist\Documents\1641 Greatfields School_Zone_2B_20170615.rvt

© SURFACE TO AIR



HEAD/DEPUTY
SECONDARY
OFFICE VIEW
AT THE ATRIUM

General Notes

1. Drawing indicates design intent only.
2. The contractor is responsible for taking and scheduling all dimensions on site.
3. Do not scale from drawings.
4. Report all discrepancies to the architect before proceeding.

Revision Date Description

Client
London Borough of Barking and Dagenham

SURFACE TO AIR

Unit 210, Metropolitan Wharf, 70 Wapping Wall, London, E1W 3SS
T: +44 (0)20 3727 2300 E: info@surface-to-air.com
Registered office in England and Wales No: 05302392

Project
Greatfields Zone 2

Drawing Title
3D Views - Internal

Scale		Status		Checked By				
@ A1				Checker				
Project	Origin	Zones	Level	Type	Role	Class/Number	Suitability	Revision
1641	S2A			A	SK	-		008

16/06/2017 12:00:19
C:\Users\la.berzouan\Documents\1641 Greatfields School_Zone_2B_20170615.rvt

© SURFACE TO AIR